

# BIG BIKE PARTS® INSTALLATION INSTRUCTIONS

Copyright© 2007 by Big Bike Parts, Inc. No part of this instruction sheet may be reproduced without the written permission of Big Bike Parts, Inc.

PART NO. 55-332

ELLIPTICAL DRIVING KIT  
HONDA VTX1300C

Revised 07/19/07

TOOLS NEEDED: #2 PHILLIPS SCREW DRIVER FINE TIPPED MARKER ¼" BIT 14MM SOCKET WRENCH THREADLOCKER  
6MM ALLEN WRENCH 5MM ALLEN WRENCH 3/16" BIT 2MM ALLEN WRENCH FILE  
10MM SOCKET WRENCH 4MM ALLEN WRENCH DRILL CLEAR SILICONE SEALANT

**NOTE: THREAD LOCKER SHOULD BE USED ON ALL HARDWARE.**

## INSTALLATION:

1. DISCONNECT THE NEGATIVE BATTERY CABLE.
2. USING A 5MM ALLEN WRENCH REMOVE THE FRONT TURN SIGNALS BY REMOVING THE BOLT AT THE BACK OF THE FORK. THEN REMOVE THE METAL COVER AND SPACER AND PULL THE TURN SIGNAL OFF THE FORK. FOLLOW THE TURN SIGNAL WIRES AND DISCONNECT THEM FROM THE BIKE. REPEAT FOR THE OTHER SIDE. BE SURE TO NOTE AS TO WHICH TURN SIGNAL IS THE LEFT AND RIGHT.

**NOTE: STEPS 3-13 & 15 ARE FOR INSTALLING OEM TURNSIGNALS WITH 82-222T ADAPTERS.**

3. REMOVE THE LENS FROM THE OEM TURN SIGNALS (G) BY REMOVING THE SCREW ON THE SIDE. WITH THE LENS REMOVED, REMOVE THE BULB. THEN REMOVE THE STEEL PLATE IN THE OEM TURN SIGNAL BY REMOVING THE TWO SCREWS.
4. CUT THE BLUE AND ORANGE PLUGS OFF THE TURN SIGNAL WIRES ABOUT 1" DOWN FROM THE ENDS OF THE PLUGS. YOU MAY NEED TO ADD WIRE LENGTH LATER ON.
5. PULL THE BLACK RUBBER ADAPTER OUT OF THE OEM TURN SIGNALS (G) AND PULL THE WIRES OUT OF THE RUBBER ADAPTER. THEN REMOVE THE METAL BRACKET ON THE INSIDE OF THE TURN SIGNAL HOUSING.
6. TAKE THE TURN SIGNAL ADAPTER (H) AND PLACE AS SHOWN IN DIAGRAM 1. MAKE SURE THAT THE CENTER OF THE HOLE ON THE ADAPTER LINES UP WITH THE CENTER MARK ON THE OEM TURN SIGNAL (G) AND MARK THE CENTER OF THE HOLE WITH A FINE TIPPED MARKER. REPEAT FOR THE OTHER SIDE.
7. DRILL A ¼" HOLE ON YOUR MARK ON THE TURN SIGNAL (G). BE CAREFUL AS TO NOT DRILL THRU BOTH SIDES OF THE TURN SIGNAL. USING A FILE REMOVE MATERIAL ON THE INSIDE OF THE HOUSING SO THE TAB ON THE ADAPTER LAYS FLAT ON THE INSIDE FACE OF THE HOUSING. REPEAT FOR THE OTHER SIDE.
8. USING A CLEAR SILICONE SEALANT LAY A SMALL BEAD AROUND THE TOP OF THE TURN SIGNALS (G). THEN PLACE THE TURN SIGNAL ADAPTERS (H) INTO PLACE AND SECURE WITH THE M6-1.0 X 10MM LONG BUTTON SOCKET HEAD CAP SCREWS (B).
9. USING THE 10MM SOCKET WRENCH REMOVE THE TWO NUTS ON THE BOTTOM OF THE TRIPLE TREE HOLDING THE HEADLIGHT BRACKET. LIFT THE HEADLIGHT BRACKET OFF FROM THE TRIPLE TREE, AND SLIDE THE MOUNTING PLATE (A) BETWEEN THE TOP OF THE TRIPLE TREE AND BENEATH THE HEADLIGHT BRACKET. REINSTALL THE NUTS JUST REMOVED AND TIGHTEN DOWN.
10. REASSEMBLE THE TURN SIGNALS IN REVERSE ORDER OF STEP 4.
11. INSTALL THE SPOT LIGHTS (E) ONTO THE LIGHT BAR (D) USING THE NUTS AND LOCK WASHERS (F) PROVIDED WITH THE SPOT LIGHTS. POSITION THE LIGHTS. TIGHTEN WITH A 14MM SOCKET.
12. ROUTE THE OEM TURN SIGNAL WIRES AND SPOT LIGHT WIRE INTO THE LIGHT BAR (D). YOU MAY HAVE TO CUT OFF OEM BULLET CONNECTORS AND ADD NEW ONES AFTER THEY ARE ROUTED.
13. THE TURN SIGNAL ADAPTERS (H) WITH OEM TURN SIGNALS (G) NEED TO BE POSITIONED INTO THE LOWER ENDS OF THE NEW LIGHT BAR (D) AND SECURED WITH THE SET SCREWS (K). THERE ARE THREE SET SCREWS ON EACH SIDE.
14. USING THE M6 – 1.0 X 16MM LONG BUTTON SOCKET HEAD CAP SCREWS AND LOCK WASHERS (C), INSTALL THE LIGHT BAR (D) ONTO THE MOUNTING PLATE (A). TIGHTEN SECURELY WITH A 4MM ALLEN WRENCH.
15. RE-ROUTE THE OEM TURN SIGNAL WIRES. YOU MAY HAVE TO ADD WIRE LENGTH FOR THE WIRES TO REACH. REATTACH THE CONNECTORS TO THE WIRES AND RECONNECT THE CONNECTORS TO THE BIKE.

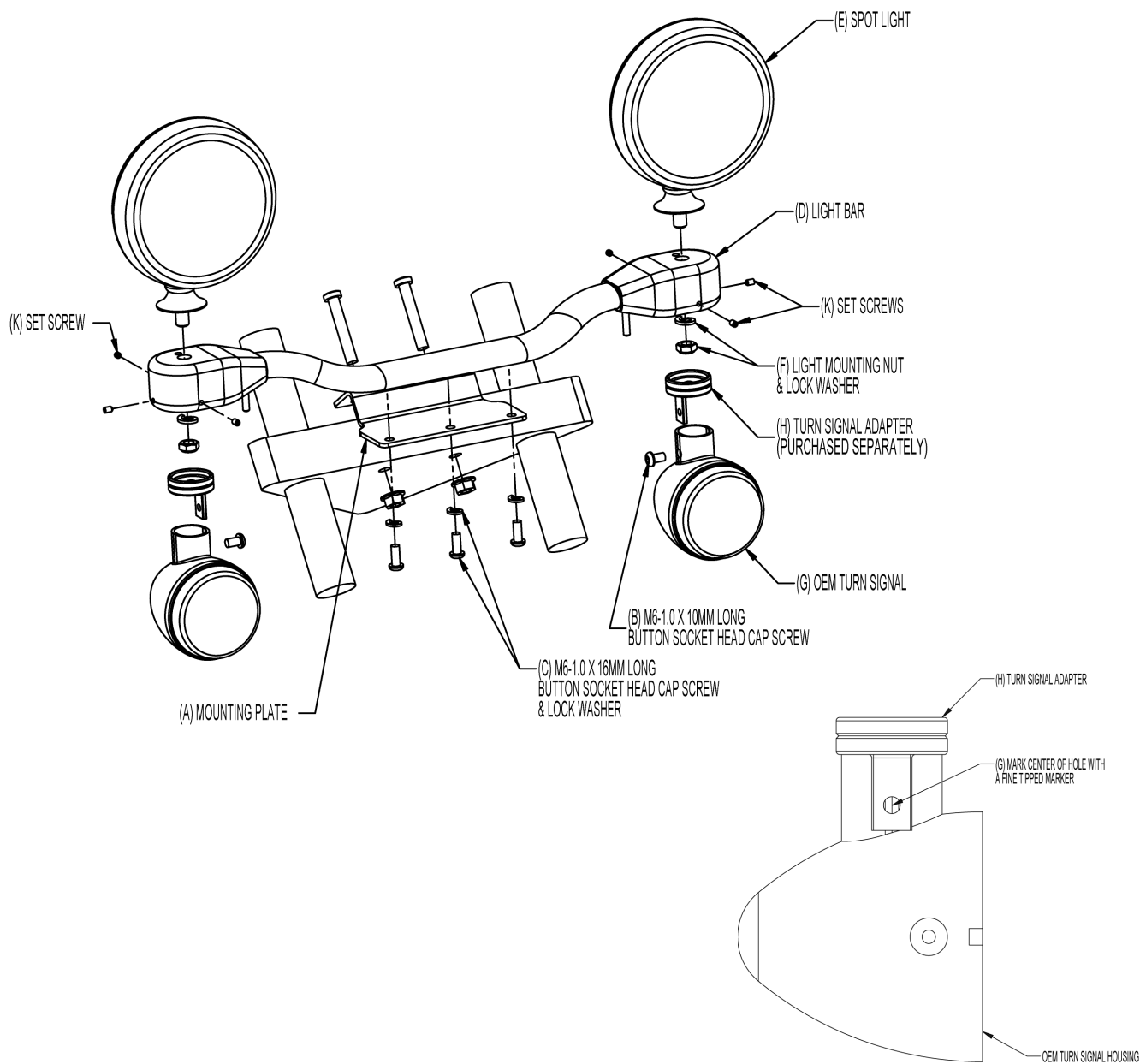
16. LOCATE YOUR BIKE'S BATTERY, FUSE BLOCK, AND/OR ACCESSORY TERMINALS AND WIRE ACCORDING TO THE DIAGRAM ON THE BACK OF THE OTHER SHEET.

**NOTE: IF A 13-207/52-605 IS PURCHASED, STEPS C & E CAN BE SKIPPED AND ONE OF THE SWITCHES CAN BE PLUGGED INTO THE RELAY.**

- A) CONNECT THE BULLET CONNECTORS ON BLACK WIRES TO BULLET CONNECTORS ON LIGHT.
- B) WIRE SMALL GREEN AND RED HARNESS WITH IN-LINE FUSE DIRECTLY TO THE BATTERY: RED (+) POSITIVE, GREEN (-) NEGATIVE.
- C) FIND A CONVENIENT PLACE TO INSTALL THE SWITCH. DRILL A PILOT HOLE FIRST AND THEN DRILL A 13/16" HOLE. (CAN BE INSTALLED IN SIDE COVER.)
- D) ROUTE WIRE HARNESS, AND PLUG THE THREE SPADE CONNECTORS TO SWITCH PER DIAGRAM: (GREEN=GROUND: ORANGE=SUPPLY: BLUE=LEAD.)
- E) CONNECT THE RING TERMINAL TO THE BATTERY GROUND AND SPLICE THE T-TAP INTO A KEYED POWER SOURCE AND CONNECT THE MALE SPADE.
- F) CONNECT THE REMAINING FIVE LEADS (2 BLACK, 1 RED, 1 BLUE AND 1 GREEN) TO THE RELAY PROVIDED AS PER DIAGRAM.

17. TEST LIGHTS FOR PROPER OPERATION BEFORE REINSTALLING ANY REMOVED SIDE COVERS, SEATS, ETC. SECURE RELAY TO KEEP FROM BOUNCING.

18. REINSTALL THE NECK COVERS BACK ON THE BIKE IN THE REVERSE ORDER OF REMOVAL.



# BIG BIKE PARTS® INSTALLATION INSTRUCTIONS

Copyright® 2007 by Big Bike Parts, Inc. No part of this instruction sheet may be reproduced without the written permission of Big Bike Parts, Inc.

PART NO. 55-332

ELLIPTICAL DRIVING KIT  
VALKYRIE VTX1800, VTX1300 RETRO

Revised 07/19/07

TOOLS REQUIRED:	#2 PHILLIPS SCREWDRIVER	13MM WRENCH	12MM WRENCH	5MM ALLEN WRENCH
	DRILL	13/16" DRILL BIT	2MM ALLEN WRENCH	6MM ALLEN WRENCH
	THREADLOCKER		4MM ALLEN WRENCH	14MM SOCKET WRENCH

**NOTE: THREAD LOCKER SHOULD BE USED ON ALL HARDWARE.**

## INSTALLATION:

1. DISCONNECT THE NEGATIVE BATTERY CABLE.
2. USING PHILLIPS SCREWDRIVER, REMOVE THE TWO SCREWS ON THE SIDE OF THE HEADLIGHT AND REMOVE THE HEADLIGHT.
3. USING A 13MM WRENCH REMOVE THE TWO NUTS UNDER THE LOWER FORK ASSEMBLY WHICH HOLD THE OEM HEADLIGHT BRACKET. (THESE NUTS WILL NOT BE REUSED)
4. INSTALL THE TWO LONG EXTENSION NUTS (C) IN PLACE OF THE OEM NUTS AND TIGHTEN SECURELY WITH A 12MM WRENCH.
5. USING THE TWO M8 - 1.25 X 20MM LONG SOCKET HEAD CAP SCREWS AND LOCK WASHERS PROVIDED (D) ATTACH MOUNTING PLATE (E) ONTO THE EXTENSION NUTS ( C ) AND TIGHTEN USING 6MM ALLEN WRENCH.
6. INSTALL THE NEW SPOT LIGHTS (H) ONTO THE LIGHT BAR (G) USING LOCK NUTS AND LOCK WASHERS (J) PROVIDED WITH THE LIGHTS. POSITION THE LIGHTS. TIGHTEN WITH A 14MM SOCKET.

**NOTE: STEPS 7,8,9, & 11 ARE FOR INSTALLING OEM TURN SIGNALS WITH PURCHASE OF 55-122T ADAPTERS.**

7. TO RELOCATE THE OEM TURN SIGNALS (K) REMOVE THEM USING A 5MM ALLEN WRENCH, UNPLUG THE WIRE LEADS THAT GO INTO THE HEADLIGHT HOUSING.
8. INSTALL EACH OEM TURN SIGNAL (K) ONTO THE TURN SIGNAL ADAPTER (L) ROUTING THE WIRES THROUGH THE EXTRA HOLE IN THE ADAPTER. THEN USING THE M6 - 1.0 X 15MM LONG BUTTON SOCKET HEAD CAP SCREW (M) TIGHTEN WITH A 5MM ALLEN WRENCH.
9. ROUTE THE TURN SIGNAL WIRES AND SPOT LIGHT WIRES INTO THE LIGHT BAR (G).
10. THE TURN SIGNAL ADAPTER (L) WITH OEM TURN SIGNAL (K) CAN BE POSITIONED INTO THE LOWER ENDS OF THE LIGHT BAR (G) AND SECURED WITH THE SET SCREWS (N). THERE ARE THREE SET SCREWS ON EACH SIDE.
11. USING THE M6 - 1.0 X 16MM LONG BUTTON SOCKET HEAD CAP SCREWS AND LOCK WASHERS PROVIDED (F) INSTALL THE LIGHT BAR (G) ONTO THE MOUNTING PLATE (E). TIGHTEN SECURELY WITH A 4MM ALLEN WRENCH.
12. RE-ROUTE THE TURN SIGNAL WIRES INTO THE HEADLIGHT HOUSING AND RE-CONNECT AS THEY WERE.
13. LOCATE YOUR BIKE'S BATTERY, FUSE BLOCK, AND/OR ACCESSORY TERMINALS AND WIRE ACCORDING TO THE DIAGRAM ON BACK.

**NOTE: IF A 13-207/52-605/52-605L SWITCH BLOCK IS PURCHASED, STEPS C & E CAN BE SKIPPED AND PLUG ONE OF THE SWITCHES INTO THE RELAY.**

- A) REMOVE THE BULLET CONNECTORS ON BLACK WIRES TO BULLET CONNECTORS ON LIGHT.
  - B) WIRE SMALL GREEN AND RED HARNESS WITH IN-LINE FUSE DIRECTLY TO BATTERY: RED (+) POSITIVE, GREEN (-) NEGATIVE.
  - C) FIND A CONVENIENT PLACE TO INSTALL THE SWITCH. DRILL A PILOT HOLE FIRST AND THEN DRILL A 13/16" HOLE. (CAN BE INSTALLED IN SIDE COVER.)
  - D) ROUTE WIRE HARNESS AND PLUG THREE SPADE CONNECTORS TO SWITCH PER DIAGRAM: (GREEN=GROUND, ORANGE=SUPPLY, BLUE=LEAD.)
  - E) CONNECT THE RING TERMINAL TO THE BATTERY GROUND AND SPLICE THE T-TAP INTO A KEYED POWER SOURCE AND CONNECT THE MALE SPADE.
  - F) CONNECT THE REMAINING FIVE LEADS (2 BLACK, 1 RED, 1 BLUE, 1 GREEN) TO THE RELAY PROVIDE AS PER DIAGRAM.
14. TEST LIGHTS FOR PROPER OPERATION BEFORE REINSTALLING ANY REMOVED SIDE COVERS, SEATS, ETC. SECURE RELAY TO KEEP FROM BOUNCING.

